

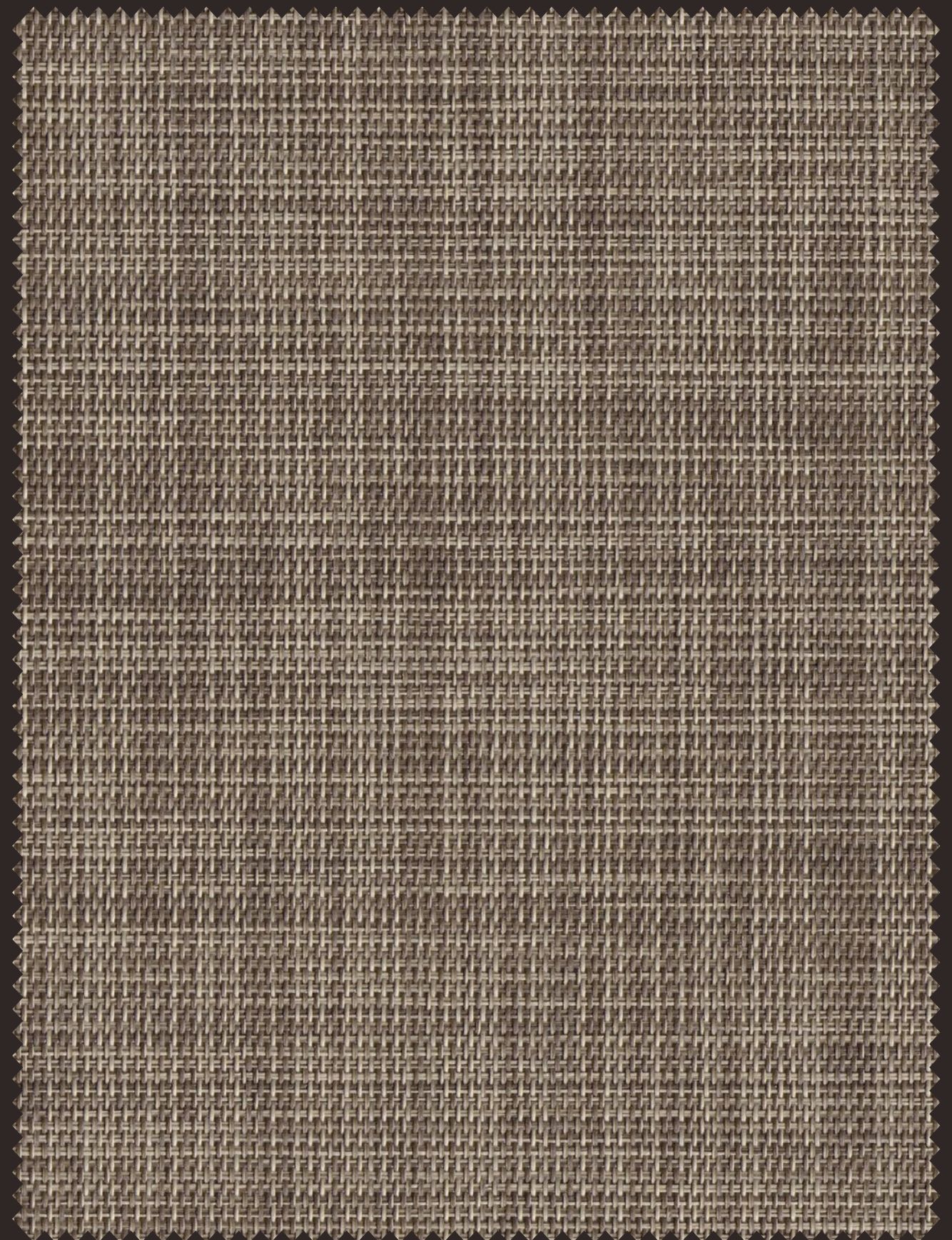


SUNCOOL FABRICS

Bromus

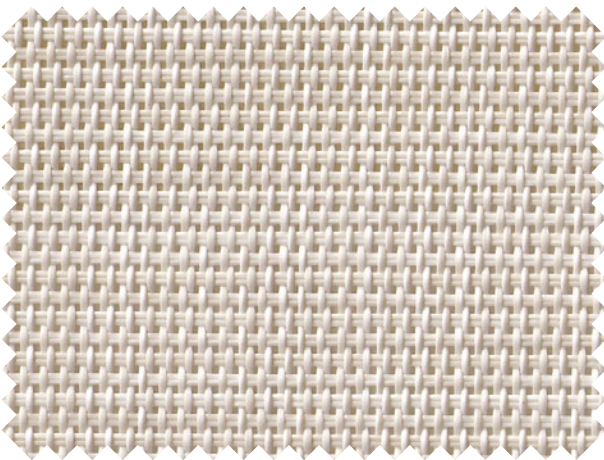
Openness
Factor 5%

FOCUS ON QUALITY

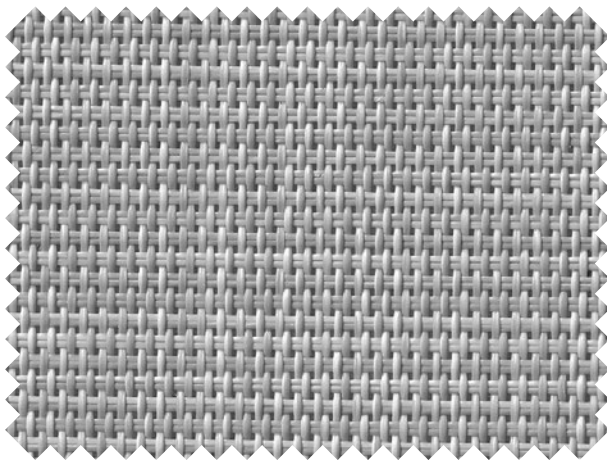


Cutting: Cold Cut, Ultrasonic, Crush Cut, or Laser
Seaming / Hemming: Thermal, High-Frequency, Ultrasonic, or Sewing

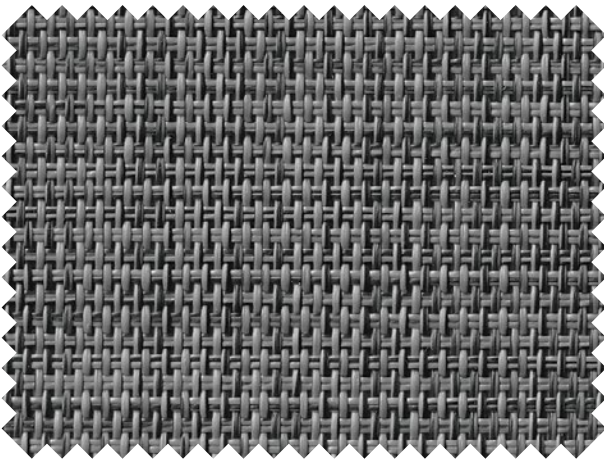
BROMUS



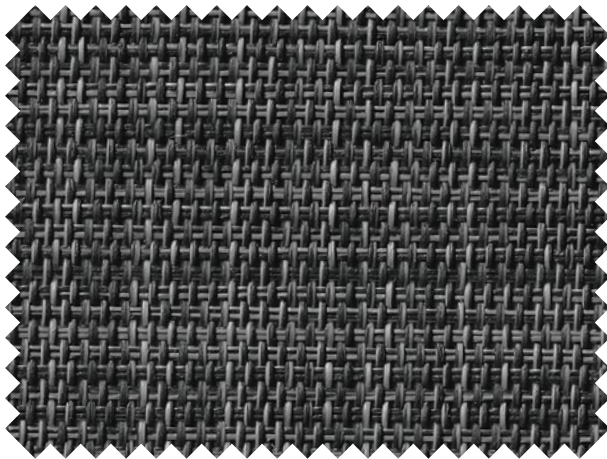
SC-L1-501



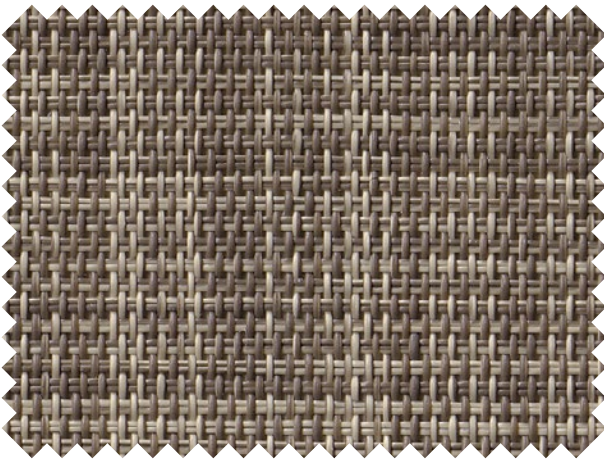
SC-L1-502



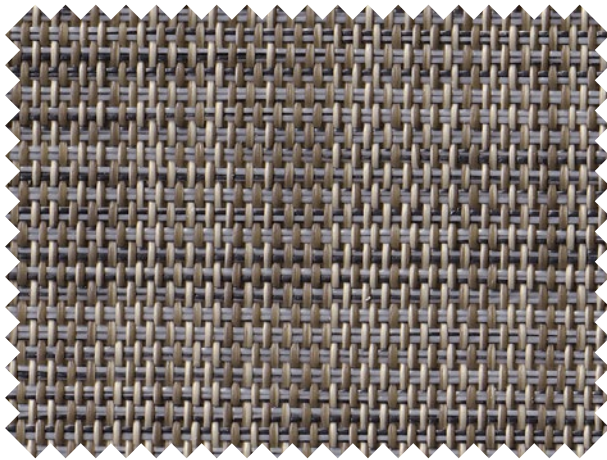
SC-L1-503



SC-L1-504



SC-L1-506



SC-L1-507

TECHNICAL PARAMETER

COMPOSITION	30%Polyester + 70%PVC	
FINISHED WIDTH	118 inch	
THICKNESS	0.029" ± 5%	
WEIGHT	12.61 oz/yd² ± 5 %	
COLOR FASTNESS	8 Grade	
YARN COUNT	48 * 46	
BREAKING STRENGTH	Warp 1600 N/5cm	Weft 1500 N/5cm

PRODUCT CERTIFICATION

HEALTH CERTIFICATION	GREENGUARD GOLD、REACH、CHINA ENVIRONMENTAL LABELLING、GB/T 2912.1-2009、SGS	
BACTERIA AND FUNGAL RESISTANCE	ASTM G21	GB/T 31402-2015/ISO 22196:2007(IDT)
FIRE RESISTANCE	B1 (CHINA)、NFPA701 (USA)	
COLOR FASTNESS	8 Grade	
WARRANTY	5-years	
FABRICATION METHODS	Cutting: cold cut / ultrasonic / crush cut Seaming / Hemming: thermal / high-frequency / ultrasonic / sewing	
CARE AND CLEANING	Remove dust with vacuum cleaner or compressed air. Do not use solvents or any abrasive substance which might damage the coating of the fabric. Rinse with clean water. Leave the shade down until completely dry. You can also rub the fabric very gently with a clean white pencil eraser to remove small stains.	

