

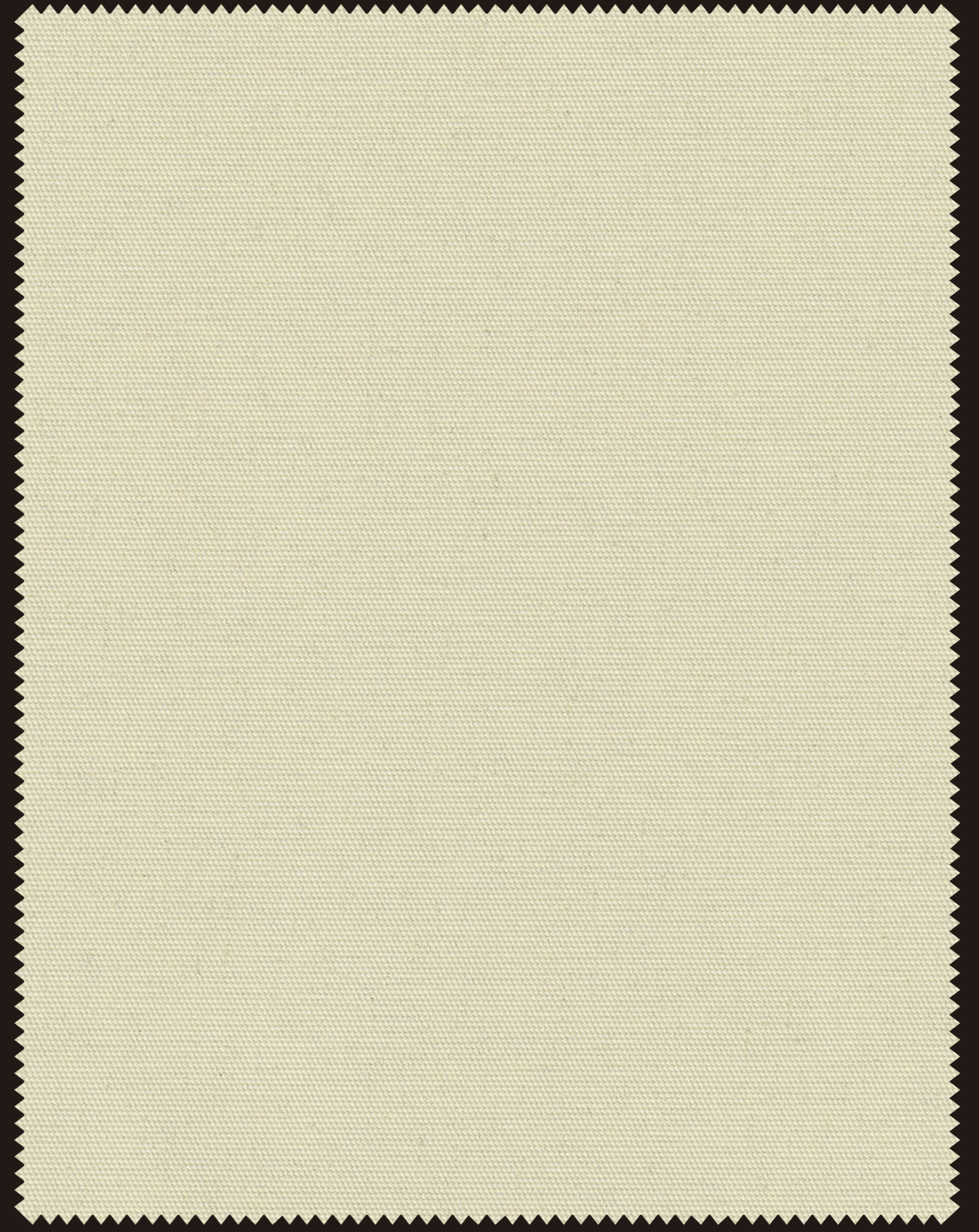
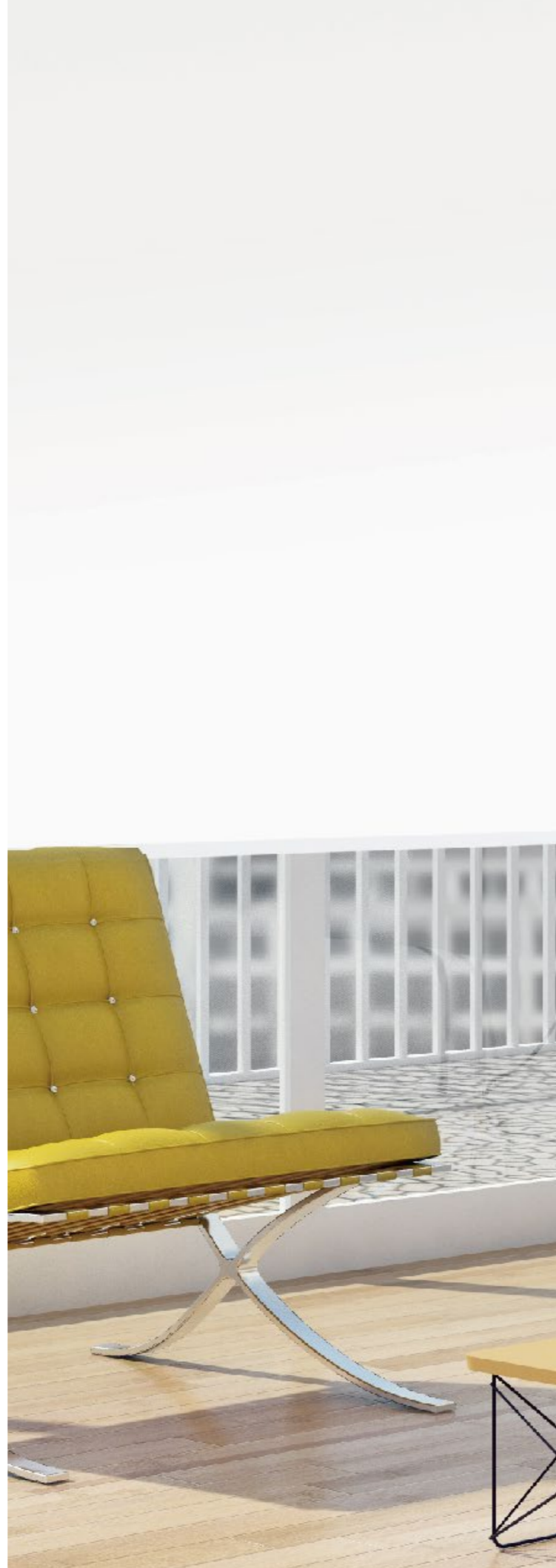


ROLLER SHADES

COLLECTION

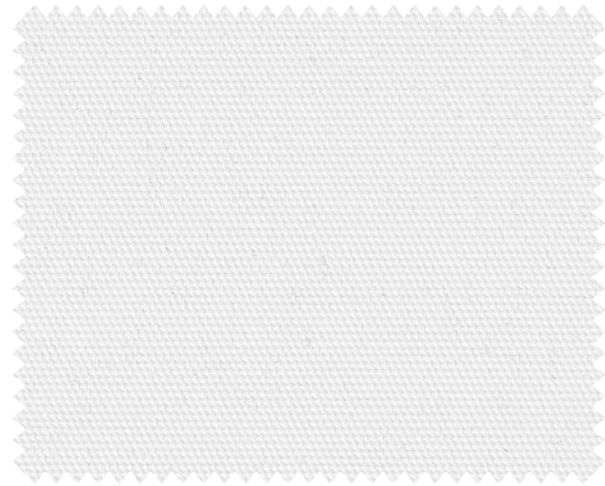
Static B/O

BLACKOUT

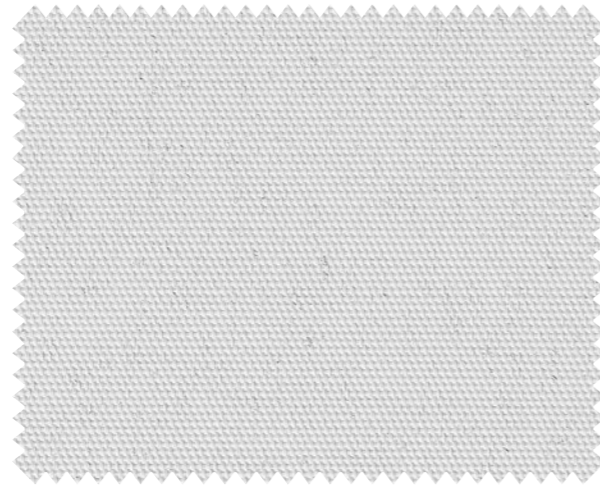


Cutting: Cold Cut, Ultrasonic, Crush Cut, or Laser
Seaming / Hemming: Thermal, High-Frequency, Ultrasonic, or Sewing

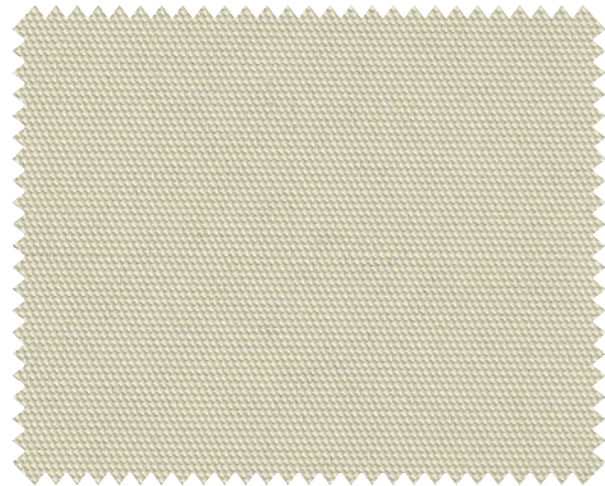
STATIC (BLACKOUT)



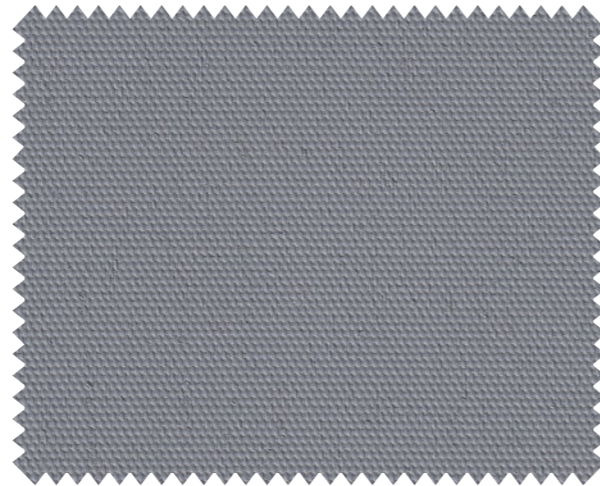
Soft White B/O (1901)



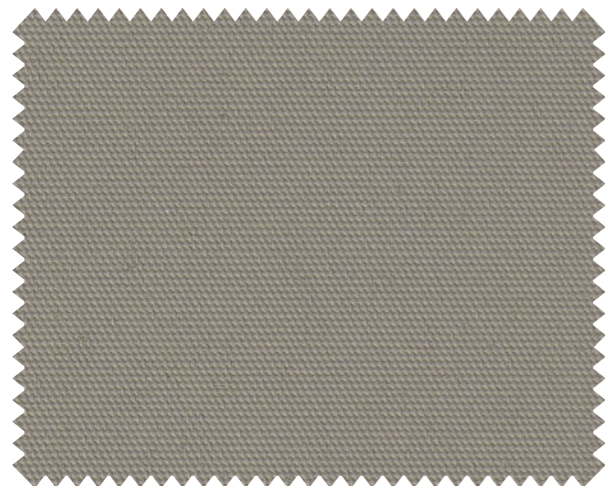
Earth B/O (1903)



Beige B/O (1904)



Grey B/O (1905)



Coffee B/O (1906)

TECHNICAL PARAMETER

	STATIC B/O
COMPOSITION	100% Polyester
FINISHED WIDTH	118 inch
THICKNESS	0.020" ± 5%
WEIGHT	10.90 oz/yd ² ± 5 %
ROLL LENGTH	33 yd
SHADING EFFECT	Blackout

PRODUCT CERTIFICATION



YUMA[®]

Add: 1960 S. Carlos Ave., Ontario, CA, 91761
 Name: Oliver Liang
 Tel: 909.988.8887 909.303.9298

YUMA USA INC